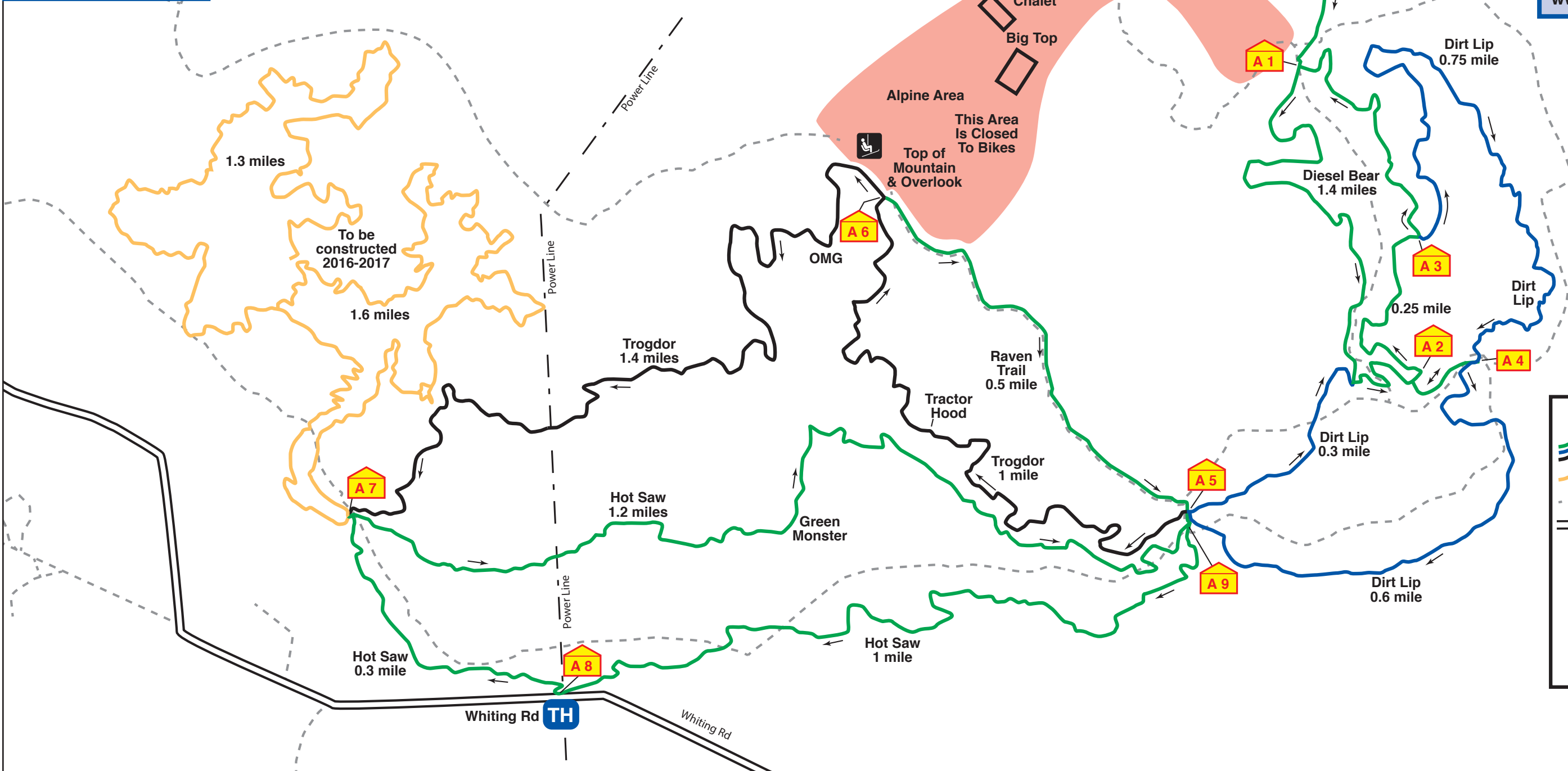


# Mountain Bike Trails Mt. Ashwabay

The CAMBA trails have been developed and are maintained by agreement and in partnership with U.S.D.A. Forest Service, Bayfield County Forest, Sawyer County Forest, Ashwabay Outdoor Education Foundation, Townships of Cable, Delta, Drummond, Lenroot, Namakagon and Hayward, and private landowners.

The Chequamegon Area Mountain Bike Association prohibits discrimination in its members, directors and officers and its programs and activities on the basis of race, color, national origin, sex, religion, age, disability, political beliefs, sexual orientation or marital or family status.

[www.cambatrails.org](http://www.cambatrails.org)



### Legend

- Existing Bike Trail
- Proposed Bike Trail
- Ski Trail
- Roads
- Direction to Ride
- Landmark
- Landmark with You Are Here Map
- Trailhead

3/16" = 105'  
0.0' 105' 210' 315' 420'